

KARIBAN

REFERENCE : K244

SIZES : S_M_L_XL_XXL_3XL

COMPOSITION :

Main fabric : Combed cotton pique 220 100%cotton
 Main fabric : Combed Cotton/Viscose pique 90/10 - 220 90% cotton/10%viscose

WEIGHT :

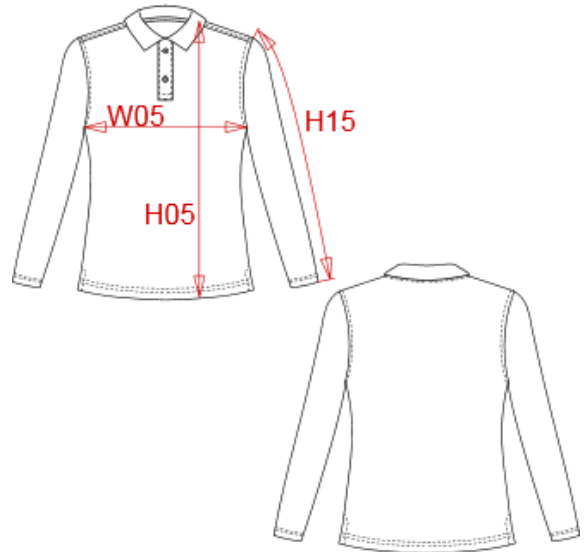
Main fabric : 220 gsm
 Main fabric : 220 gsm

FABRIC CONSTRUCTION AND FINISHING :

Enzyme wash

ARTICLE WEIGHT :

240 gr/pc



DESCRIPTION							
Français : Polo femme manches longues							
English : Ladies long sleeve pique polo shirt							
Nederlands : Dames polo met lange mouwen							
Deutsch : Damen langarm polohemd pique							
Español : Polo de manga larga para mujer							
Italiano : Polo pique' donna maniche lunghe							
Português : Polo de senhora manga comprida							

MEASUREMENT							
Description	S	M	L	XL	2XL	3XL	
H05 Hauteur totale / Total height	63	64,50	66	67,50	69,75	72	
W05 1/2 largeur poitrine / 1/2 chest width	46	48	50	52	55	58	
H15 Longueur manche / Sleeve length	60	61	62	63	64	65	

CARE LABEL						
For Cotton	For Cotton/Viscose		For Cotton	For Cotton/Viscose		

PACKING	
Box	25 pcs / box S => L:50cm W:34cm H:20cm GW:6.40kg NW:5.10kg M => L:50cm W:34cm H:20cm GW:6.80kg NW:5.50kg L => L:52cm W:34cm H:20cm GW:7.30kg NW:5.90kg XL => L:52cm W:34cm H:20cm GW:7.70kg NW:6.30kg XXL => L:54cm W:36cm H:20cm GW:8.20kg NW:6.70kg 3XL => L:56cm W:38cm H:20cm GW:8.70kg NW:7.10kg

COLORS	PANTONE SERIGRAPHIE
White	White
Black	Black
Navy	296C
Red	200C
Dark grey	432C
Orange	1585C
Chocolate	439C
Sky blue	278C
Dark khaki	418C
Tropical blue	2185C
Oxford grey	-
Yellow	1225C
Light royal blue	7685C
Kelly green	7727C
Fuchsia	219C
Purple	7447C
Wine	7645C
Lime	367C
Forest green	5605C
Light sand	482C