

KARIBAN

REFERENCE : K243

SIZES : S_M_L_XL_XXL_3XL_4XL

COMPOSITION :

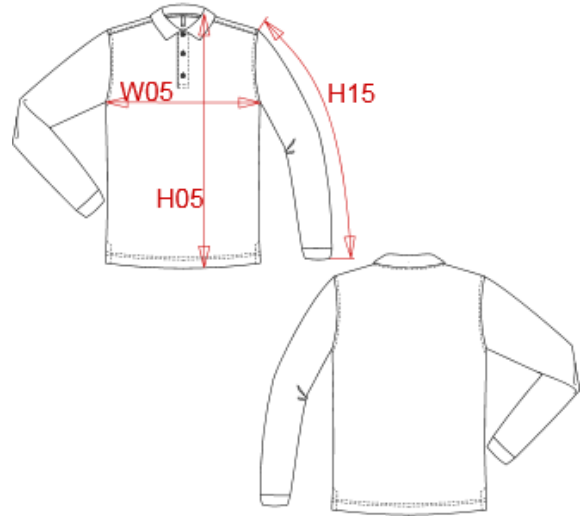
Main fabric : Combed cotton pique 220 100%cotton
 Main fabric : Combed Cotton/Viscose pique 90/10 - 220 90% cotton/10%viscose

WEIGHT :

Main fabric : 220 gsm
 Main fabric : 220 gsm

ARTICLE WEIGHT :

310 gr/pc



DESCRIPTION	
Français : Polo homme manches longues	
English : Men's long sleeve pique polo shirt	
Nederlands : Heren polo met lange mouwen	
Deutsch : Herren langarm polo hemd pique	
Español : Polo de manga larga	
Italiano : Polo pique' uomo maniche lunghe	
Português : Polo de manga comprida	

MEASUREMENT							
Description	S	M	L	XL	2XL	3XL	4XL
H05 Hauteur totale / Total height	72,50	74,50	76,50	78,50	80,50	83,25	86
W05 1/2 largeur poitrine / 1/2 chest width	50	53	56	59	62	66	70
H15 Longueur manche sans poignet / Sleeve length without cuff	59	61	63	65	67	69,20	71,40

CARE LABEL						
For Cotton	For Cotton/Viscose		For Cotton	For Cotton/Viscose		

PACKING	
Box	25 pcs / box S => L:54cm W:38cm H:20cm GW:7.80kg NW:6.50kg M => L:54cm W:38cm H:20cm GW:8.30kg NW:7.00kg L => L:58cm W:40cm H:20cm GW:8.90kg NW:7.50kg XL => L:58cm W:40cm H:20cm GW:9.40kg NW:8.00kg XXL => L:62cm W:42cm H:20cm GW:10.00kg NW:8.50kg 3XL => L:64cm W:44cm H:20cm GW:10.60kg NW:9.00kg 4XL => L:64cm W:44cm H:20cm GW:11.10kg NW:9.50kg

COLORS	PANTONE SERIGRAPHIE
White	White
Black	Black
Navy	296C
Red	200C
Dark grey	432C
Dark khaki	418C
Orange	1585C
Chocolate	439C
Sky blue	278C
Tropical blue	2185C
Oxford grey	-
Yellow	1225C
Light royal blue	7685C
Kelly green	7727C
Fuchsia	219C
Purple	7447C
Wine	7645C
Lime	367C
Forest green	5605C
Light sand	482C