



# FRONT ROW & CO

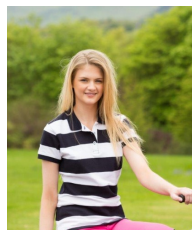
## HERITAGE CLOTHING

# STRIPED PIQUE POLO

## FR210



Matches with:



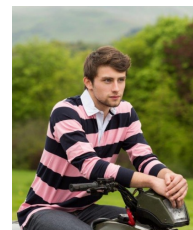
FR211



FR009



FR200



FR110

- Striped Pique Polo
- Engineered stripes
- Contrast tape detail in back neck and side vents
- Pearlised buttons with X stitch detail
- Flat knit collar
- 2 button placket
- Side vents with contrast trim
- Contrast trim in back neck
- Matches Ladies Style FR211
- 100% Cotton
- 200 gsm
- XS-XXL

- 100% Cotton
- 200 gsm
- Wash at 40 degrees
- Wash Dark Colours Separately
- Wash and Dry Inside Out
- Re-shape While Damp
- Do Not Leave Folded When Damp
- Dry Out of Direct Heat and Sunlight
- Iron on Reverse

To Fit Sizes	XS	S	M	L	XL	XXL
Chest (cms)	86-91	91-96	96-101	107	112-117	122
Chest (inches)	34"-36"	36"-38"	38"-40"	42"	44"-46"	48"

Garment Measurements	XS	S	M	L	XL	XXL
Chest (cms)	46.0	48.0	52.0	56.0	60.0	64.0
Length (cms)	68.0	71.5	73.5	75.5	77.5	79.5
sleeve length (cms)	23.5	24.0	24.5	25.5	26.0	26.5



REGATTA BLUE / NAVY



PINK / NAVY



NAVY / WHITE



HEATHER GREY / NAVY