

# KARIBAN

**REFERENCE :** K481

**SIZES :** XS\_S\_M\_L\_XL\_XXL

**COMPOSITION :**

Main fabric : French Terry Organic cotton / Polyester 80/20 -  
300 80%organic cotton / 20%polyester

**WEIGHT :**

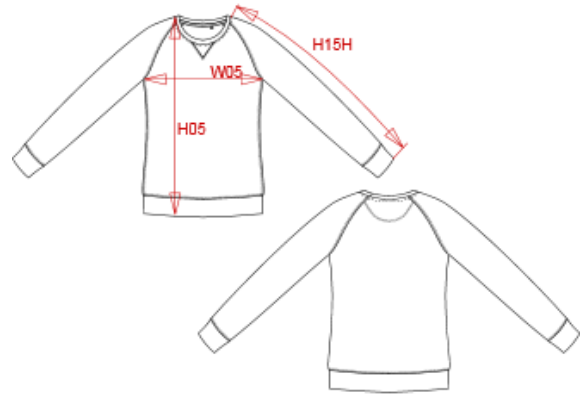
Main fabric : 300 gsm

**FABRIC CONSTRUCTION AND FINISHING :**

LST (Low Shrinkage Terry) OCS Blended certified

**ARTICLE WEIGHT :**

345 gr/pc



DESCRIPTION	
<b>Français :</b>	Sweat-shirt BIO col rond manches raglan femme
<b>English :</b>	Ladies' organic cotton crew neck raglan sleeve sweatshirt
<b>Nederlands :</b>	Damessweater BIO ronde hals raglanmouwen
<b>Deutsch :</b>	Damen Sweatshirt BIO-BAUMWOLLE Rundhalsausschnitt
<b>Español :</b>	Sudadera orgánica con cuello redondo y manga raglán para mujer
<b>Italiano :</b>	Felpa donna BIO collo rotondo maniche raglan
<b>Português :</b>	Sweatshirt BIO de senhora com decote redondo e mangas raglan

COLORS	PANTONE SERIGRAPHIE
Black	Black
Navy	296C
Red	200C
Storm grey	Cool gray 10C
Mossy green	7771C
Grey heather	-
French navy heather	-
Wine heather	-
Ocean blue heather	-

MEASUREMENT						
Description	XS	S	M	L	XL	XXL
<b>H05</b> Hauteur totale / Total height	59,50	61	62,50	64	65,50	67,75
<b>W05</b> 1/2 largeur poitrine / 1/2 chest width	45	47	49	51	53	56
<b>H15H</b> Longueur manche raglan avec bord côte / Raglan sleeve length with rib	69,50	71	72,50	74	75,50	77,50

CARE LABEL				

PACKING	
Box	20 pcs / box XS => L:58.1cm W:37.8cm H:32cm GW:7.85kg NW:6.85kg S => L:58.1cm W:37.8cm H:32cm GW:7.95kg NW:6.95kg M => L:58.1cm W:37.8cm H:32cm GW:8.50kg NW:7.50kg L => L:58.1cm W:37.8cm H:32cm GW:8.80kg NW:7.80kg XL => L:58.1cm W:37.8cm H:42cm GW:9.40kg NW:8.15kg XXL => L:58.1cm W:37.8cm H:42cm GW:9.80kg NW:8.55kg